

JANUARY NEWSLETTER

Marysville Elementary School
(250) 427-2241
sd6.bc.ca/mes



Cold Weather & Winter Clothes

Winter is here! Please ensure that your child is adequately dressed when they arrive at school, particularly as we move into the colder winter months. Students are asked to play outside even on cooler days so that they can burn off some energy, play with their friends and can thus be more ready to learn in class. Students will usually be asked to remain inside on days when the temperature is below -20.

**Thanks for making sure your child has:
winter boots, winter jacket, snow pants, warm mitts and a toque.**

Indoor Shoes & Water Bottles

Please remember to send your child's inside shoes back to school. Running shoes are ideal for inside footwear as students can also use them in the gym. Please also be sure that they always have a full change of clothes that stays at their hook in case of any accidents or spills. As well, please remember to send a re-useable water bottle with your child every day.

Free Hot Lunch and Breakfast Bins

Thank you to our PAC committee for covering the expense of hot lunches for this year. Our next Free Pizza Day will be Thursday, January 23/25. Our breakfast bins are going well! They are in each classroom every day with options of hard-boiled egg, fruit, veggies, and toast or bagel. Children can access the bin in the morning, for recess snack or to top off their lunch.

Next PAC Meeting

Please note the next PAC meeting is on Wednesday, January 22nd at 6:30pm in the library. If you would like a link to join virtually via TEAMS, Stacy will be sending one out to everyone. Thank you to PAC for hosting a Pancake Breakfast on the last day of school before Winter Break!! PAC is planning a fun family movie night in our gym in February. Stay tuned for more information.

Kindergarten Registration for 2025-2026 School Year

Registration for the 2025-2026 school year begins on January 20th and continues through to January 31st. Children who are turning 5yrs of age on or before December 31, 2025 are eligible to register for Kindergarten. Please follow this link [Kindergarten Tile](#) or go to www.sd6.bc.ca for more information. Please don't hesitate to contact the school as well. Shannon.portman@sd6.bc.ca 250-427-2241

Absences

Understanding and increasing attendance rates in schools is a priority in British Columbia. Across North America schools are seeing growing trends of chronic absenteeism, which is defined as 10% or greater absence from school. It may not seem much, but missing just two days a month over the course of a year translates to missing 10% -- the equivalent of a month of learning! Chronic Absenteeism has a profound effect not only on learning, but also on social/emotional wellness and school completion. Across North America, absenteeism has risen since the pandemic, although there does not seem to be a clear reason why. To understand the scope of absenteeism, Rocky Mountain School District is tracking monthly attendance across schools. Here is our current Marysville data:

September:

More than 10% absence – 30%

More than 20% absence – 8%

October:

More than 10% absence – 35%

More than 20% absence – 7%

November:

More than 10% absence – 49%

More than 20% absence – 25%

December:

More than 10% absence – 17%

More than 20% absence – 5%

We understand that infrequent, short-term absences are to be expected. Some examples are:

- illness and recovery
- appointments
- special family events (e.g., vacations, travel to visit family, etc.)
- injuries or chronic illnesses
- participation in Indigenous cultural and traditional activities

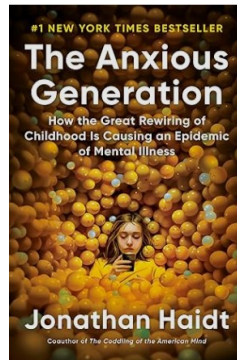
Sometimes, though, we are unaware of how the extra days we keep kids home are accumulating. Beginning this month, I will be sending a quick e-mail to families whose children have missed 10% or more over the course of the month, with a year-to-date absence rate if it is informative. This is just for your information and no follow up is required. The e-mail is solely meant to raise awareness.

Learning is social, requiring collaboration and communication, and is led with the expertise of teachers. What we do in schools cannot be replicated with homework. We are hopeful that by raising awareness of the potential long-term issues of absences and informing you of patterns of absenteeism we can support you in your efforts to have your children attend school as consistently as possible.

I am always available to work with and support anyone who is having a challenge with student attendance. Please call to make an appointment so we can spend some time together. 250-427-2247.

Book club offer:

I have just finished reading a book called "**The Anxious Generation: How the great rewiring of childhood is causing an epidemic of mental illness**", by Jonathan Haidt. This book by argues that the spread of smartphones, social media and cautious parenting styles have led to a "rewiring" of childhood and a rise in mental illness. Haidt provides suggestions about ways that caregivers can help kids to disconnect and restore a more carefree childhood. Two schools in Invermere have offered this and had great parent participation. I would like to offer the same. I will send an email inviting you to sign up if you are interested. The school will buy the books, and you can pay us back if you are able to. We will meet just 4 times (in-person and online available) to meet and talk about the book. This book shares research and statistics that I strongly recommend that every parent knows.



January 2025

Sun	Mon	Tue	Wed	Thu	Fri	Sat
			1	2	3	4
	WINTER BREAK					
5	6 <i>First Day Back from Winter Break</i>	7	8	9	10	11
12	13	14	15	16	17	18
19	20	21	22 <i>PAC Meeting 6:30pm</i>	23 <i>Free Pizza Hot Lunch</i>	24 <i>Sports Fan Day</i>	25
Kindergarten Online Registration						
26	27	28	29	30	31	
Kindergarten Online Registration						

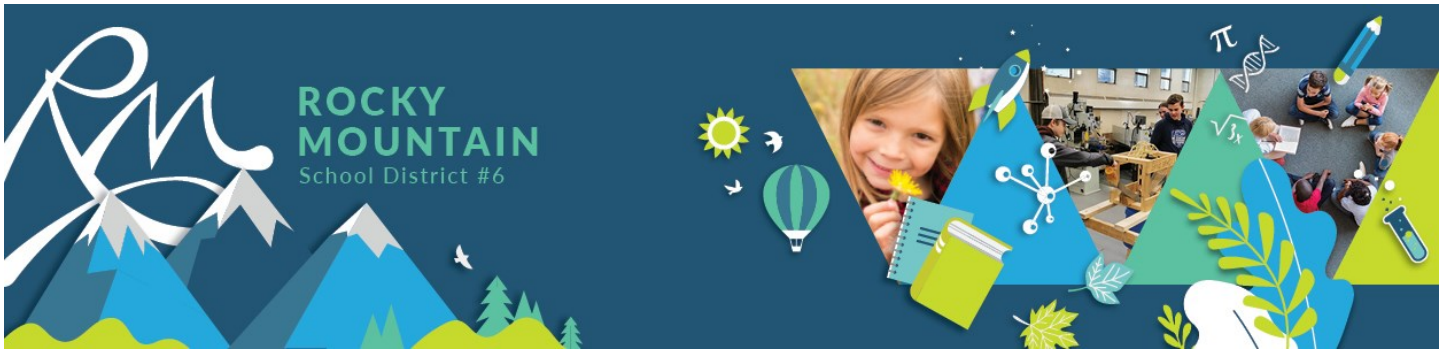


February 2025

Sun	Mon	Tue	Wed	Thu	Fri	Sat
						<i>1</i>
Kindergarten Online Registration						
<i>2</i>	<i>3</i>	<i>4</i>	<i>5</i>	<i>6</i>	<i>7</i>	<i>8</i>
<i>9</i>	<i>10</i>	<i>11</i>	<i>12</i>	<i>13</i> <i>Free Pizza</i> <i>Hot Lunch</i>	<i>14</i> <i>100's Day</i> <i>Dress-up</i>	<i>15</i>
<i>16</i>	<i>17</i> <i>Family</i> <i>Day</i> <i>No</i> <i>School</i>	<i>18</i> <i>Pro-D</i> <i>Day</i> <i>No</i> <i>School</i>	<i>19</i>	<i>20</i>	<i>21</i>	<i>22</i>
<i>23</i>	<i>24</i>	<i>25</i>	<i>26</i> <i>Pink Shirt</i> <i>Day</i>	<i>27</i>	<i>28</i>	

MARCH 2025

Sun	Mon	Tue	Wed	Thu	Fri	Sat
						<i>1</i>
<i>2</i>	<i>3</i>	<i>4</i>	<i>5</i>	<i>6</i>	<i>7</i>	<i>8</i>
<i>9</i>	<i>10</i>	<i>11</i> <i>Talent Show</i>	<i>12</i>	<i>13</i>	<i>14</i> Last day of School before Spring Break Hat Day	<i>15</i>
<i>16</i>	<i>17</i>	<i>18</i>	<i>19</i>	<i>20</i>	<i>21</i>	<i>22</i>
	SPRING BREAK					
<i>23</i>	<i>24</i>	<i>25</i>	<i>26</i>	<i>27</i>	<i>28</i>	<i>29</i>
<i>30</i>	<i>31</i>					
	SPRING BREAK					



Registering for Kindergarten in Rocky Mountain School District

Registration for the 2025-2026 school year begins on January 20 and continues through to January 31, 2025.



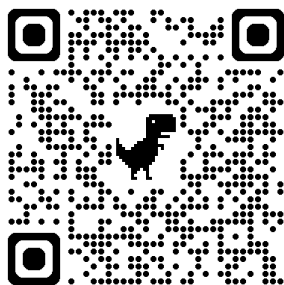
Who Can Register: Children that will be 5 years of age on or before December 31, 2025 are eligible to register for Kindergarten.

How to Register: Please go to the Rocky Mountain School District website (www.sd6.bc.ca) and click on the registration tile.

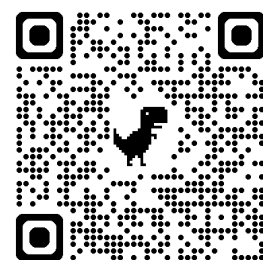


Additional information regarding Kindergarten and Early Learning can be found on the [Early Learning and Child Care page](#) on the kindergarten tile.

Registration Tile QR



Kindergarten Tile QR



WHO SAYS PICNICS ARE FOR SUMMER?!



GINGERBREAD PICNIC

SATURDAY, JANUARY 25 10:00 - 12:00
Blarchmont Learning Centre

1850 WARREN AVENUE, KIMBERLEY

FOOD!

ACCESS LOCAL SERVICES!

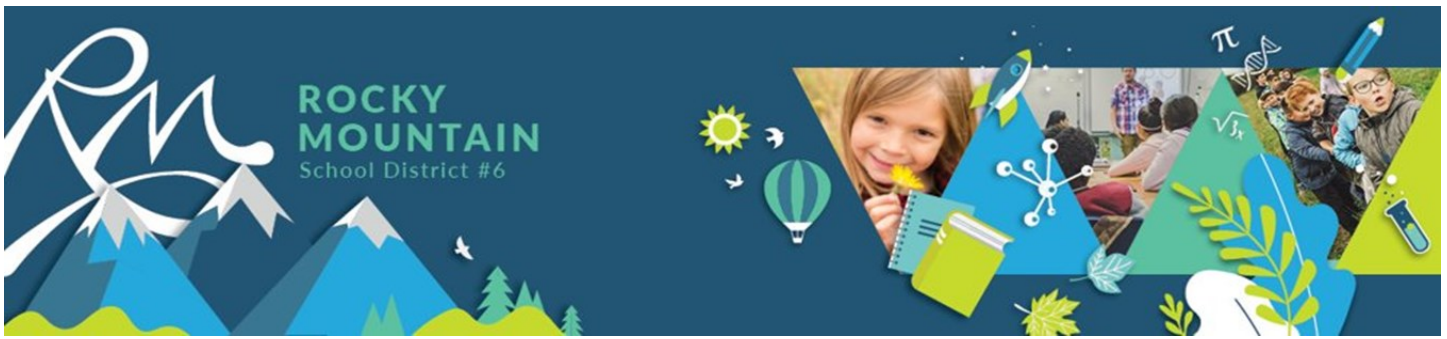
FOR FAMILIES WITH CHILDREN AGED BIRTH-5 YEARS

FREE GIFT BAG!

LOCAL SERVICE PROVIDERS WILL HAVE FUN ACTIVITIES AND INFORMATION FOR FAMILIES WITH YOUNG CHILDREN. HAVE FUN AND LEARN ABOUT THE SUPPORTS AND SERVICES AVAILABLE!



Join other families and caregivers with pre-school aged children at a FREE Ministry of Education and Child Care funded family-oriented event. Receive information about FREE local early learning programming and services available for you and your child!



ENROLLING IN KINDERGARTEN!

A Conversation Starter for Parents

The School Act states that families can enroll their child in an educational program, provided by a Board of Education the year their child will have reached the age of 5 years by December 31. While most children start school the year they turn 5, parents of children in British Columbia may defer the enrolment of their child until the first school day of the year they turn 6 by December 31.

If a family is considering deferring Kindergarten enrollment, it is advised that they speak to their catchment area school directly in order to make the best decision for their child. Once a student starts Kindergarten, this decision cannot be changed.



Below is some information to consider when thinking about enrolling your child in Kindergarten.

Potential Benefits of a Deferred Start	Potential Outcomes of a Deferred Start
Deferring school can provide some additional time for a child to mature.	Deferring entry to school also delays early intervention and supports that can be provided by the school team.
If school is deferred, this can provide children and families time to work on social skills that the child may not have learned yet.	Different skills develop at different rates. Children who are still learning social skills may have strong academic skills and these may be affected by a deferred start.
A combination of a child being young when entering kindergarten, along with concerns of a child's learning ability, may cause parents to wonder about the best time for their child to start kindergarten.	Research indicates that deferring kindergarten entry has no long-term effect on academic achievement. By Grade 3, early differences tend to disappear. Your child's school can provide you with more information.



Kindergarten programs are supportive of all children, whether they are still four years old or approaching age six when they start. The learning outcomes in

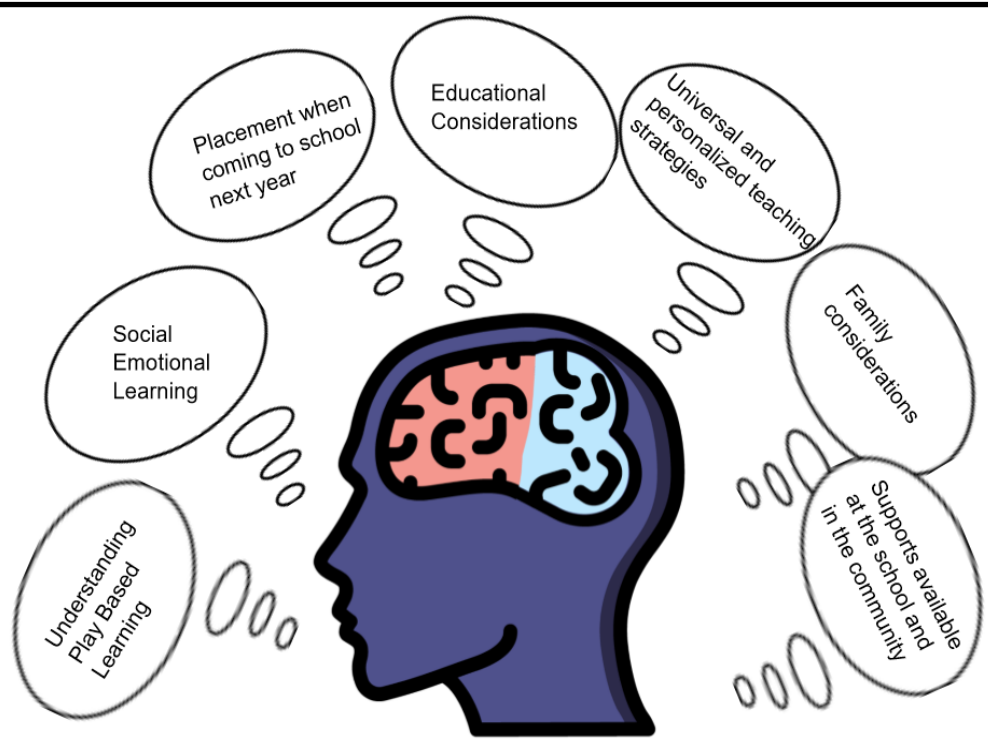


Kindergarten recognize and celebrate that students reach their developmental milestones at different ages. In Kindergarten, all children are provided with many opportunities to learn and develop new social and academic skills with their peers in a caring, inclusive classroom setting.



Deferring Kindergarten does not guarantee improvement for your child. This is a decision that requires careful consideration and should be made in consultation with your child's school.

When making a decision to defer Kindergarten for your child, it is important to consult with the administration at the school where your child will attend. They will hear your concerns, answer questions, present options and explain the pros and cons. There are many pieces to consider and discuss, including but not limited to:



Possible topics of Conversation with School Admin.



Kindergarten Gradual Entry Frequently Asked Questions

What is gradual entry?

In 2010, kindergarten shifted from a half-day program to a full-day program in the province of British Columbia. Since that time, the Ministry of Education and Child Care has strategically allowed for fewer minutes of instruction in kindergarten to support a gradual entry during the first two weeks of school.

Why is gradual entry valuable?

The most significant transition a child will make in their education journey is from early years into kindergarten. The kindergarten experience sets the stage for the next 13 years of a child's path from the primary grades, to upper elementary, right through to high school graduation.

While gradual entry may look somewhat different at schools across the district, the first two weeks of kindergarten are all designed to provide time and space for classroom teachers to attend more closely to each child's entry into their new environment. Families also have time and space to build relationships with teachers during gradual entry which is equally critical because the more comfortable families are with the kindergarten transition, the more relaxed children will be about coming to kindergarten.

Gradual entry involves introducing children to the physical space of the school including classrooms, bathrooms, gymnasium, library, playground, and other areas, all of which are critical in developing a sense of place for children. Shorter days allow children to learn important structures, routines, and expectations so they can develop a level of comfort, confidence, and independence in their new surroundings without becoming overwhelmed and/or overstimulated which can result in adverse experiences and associations with school.

The goal for all gradual entry plans is to have children happy, comfortable, and excited to come to school which naturally translates into families feeling confident in sending their children to school.

When will I know my school's gradual entry plan?

Schools will share gradual entry plans with their registered kindergarten families no later than the first week of July to allow families time to plan for September. Additionally, all gradual entry plans will be posted on the [Kindergarten](#) tile of the school district website.

Kindergarten Tile QR

